

AN NGUYEN, RBT

Hannah MacNaul, Ph.D., BCBA-D, LBA, LSSP

INTRO:

- Antecedent interventions focus on modifying the environment in a way that prevents challenging behavior from occurring and enhances motivation for appropriate behavior.
- Within the last 20 years, antecedent interventions have gained popularity for their utility in naturalistic settings such as classrooms; however, research is still somewhat limited on the effectiveness in other settings (Reed & Reed, 2015).

PURPOSE:

- Investigate the effectiveness of various antecedent interventions in decreasing challenging behavior in a naturalistic context (i.e., summer camp).

Participants

- 7 M, 1 F (ASD)
- Mean age of 10.88 years (age range = 6 to 22 years old)

Dependent Variables

- Challenging behavior
- Secondary DVs (not graphed):
 - Communication
 - Social engagement

Method

- Summer camp for individuals with autism
- Multiple-probe design across participants

Conditions

- Baseline:
 - Open house day (i.e., before camp, no intervention)
 - Day 1 of camp (i.e., no intervention)
- Signaling transitions, Premack principle, or functional communication training

IOA & TI

- Interobserver agreement had a mean agreement of 99.68% (range = 95 to 100%) across all participants
- Treatment integrity had a mean of 65% (range = 60 to 80%) across all sessions

Challenging behavior decreased to zero levels, indicating that antecedent interventions can be embedded into naturalistic contexts (e.g., day camp).



Figure 1

All Participant Pre/Post Outcomes: Interventions Combined

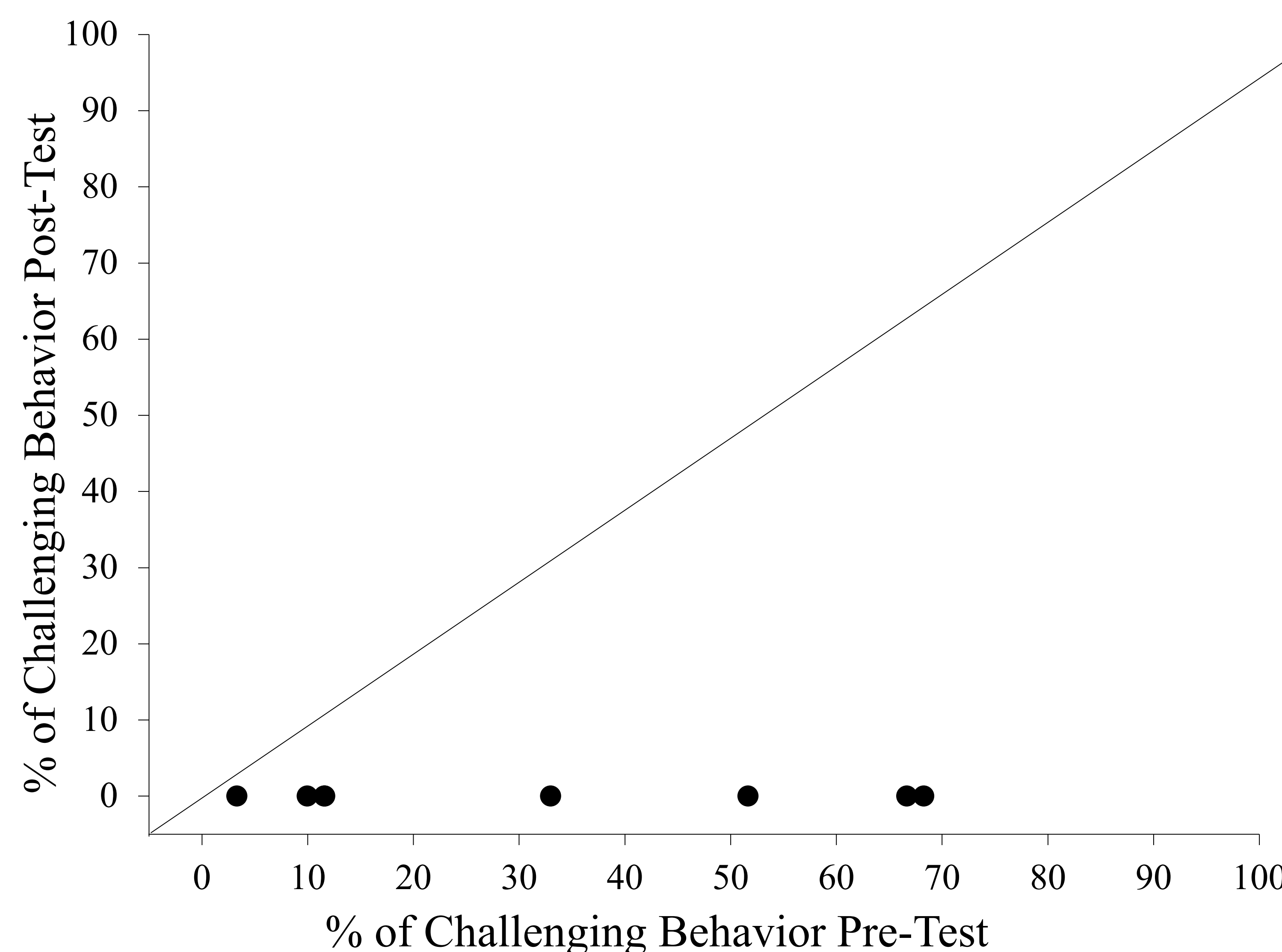
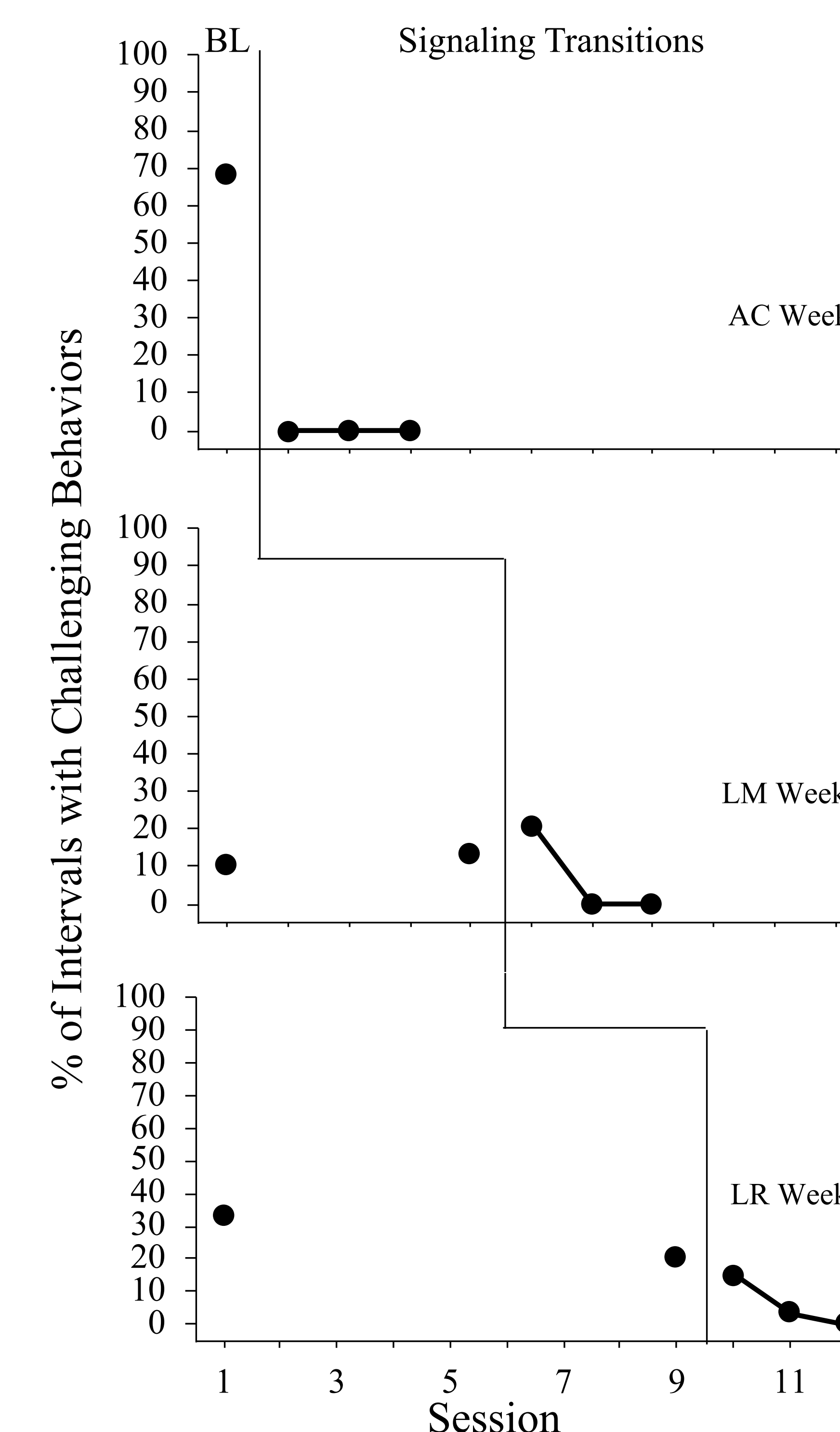


Figure 2

Percentage of Intervals with Challenging Behavior Using Signaling Transitions



Antecedent Interventions for Challenging Behavior in Naturalistic Contexts

Authors

An Nguyen, RBT, UTSA, Department of Educational Psychology

Hannah MacNaul, Ph.D., BCBA-D, LBA, LSSP, UTSA, Department of Educational Psychology

Abstract

Antecedent interventions focus on modifying the environment in a way that prevents challenging behavior from occurring and enhances motivation for appropriate behavior (Cooper, et al., 2019). Within the last 20 years, antecedent interventions have gained popularity for their utility in naturalistic settings such as classrooms; however, research is still somewhat limited on the effectiveness of such interventions in other settings (Reed & Reed, 2015). Thus, the purpose of this study was to investigate the effectiveness of various antecedent interventions in decreasing challenging behavior in a naturalistic context (i.e., summer camp for children with autism). Participants consisted of one female and seven males attending a day camp for children with autism. A multiple-probe design across participants was used to evaluate the effects of three interventions: signaling transitions, Premack principle, and functional communication training. Across all of the participants, challenging behavior decreased to zero levels indicating that antecedent interventions can be embedded into naturalistic contexts such as a day camp. Clinical implications and future research will be discussed.

Results

Figure 1

All Participant Pre/Post Outcomes: Interventions Combined

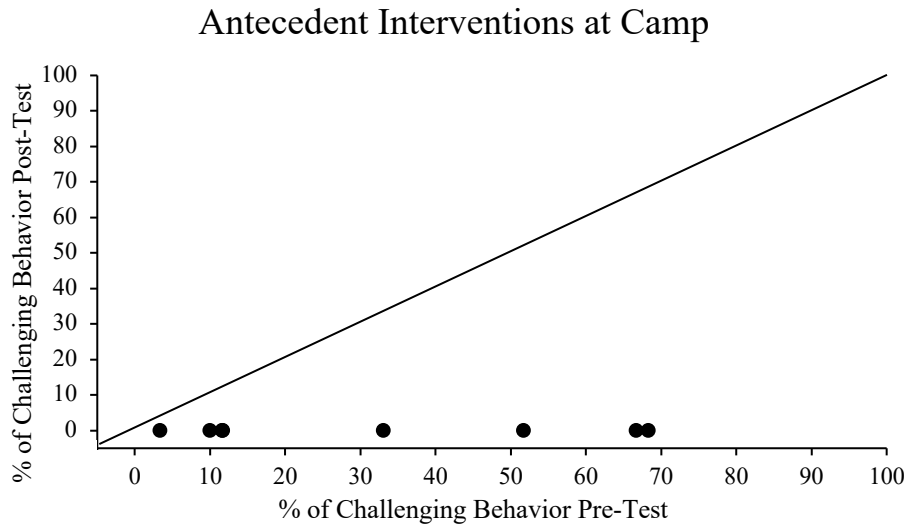


Figure 2

Percentage of Intervals with Challenging Behavior Using Signaling Transitions

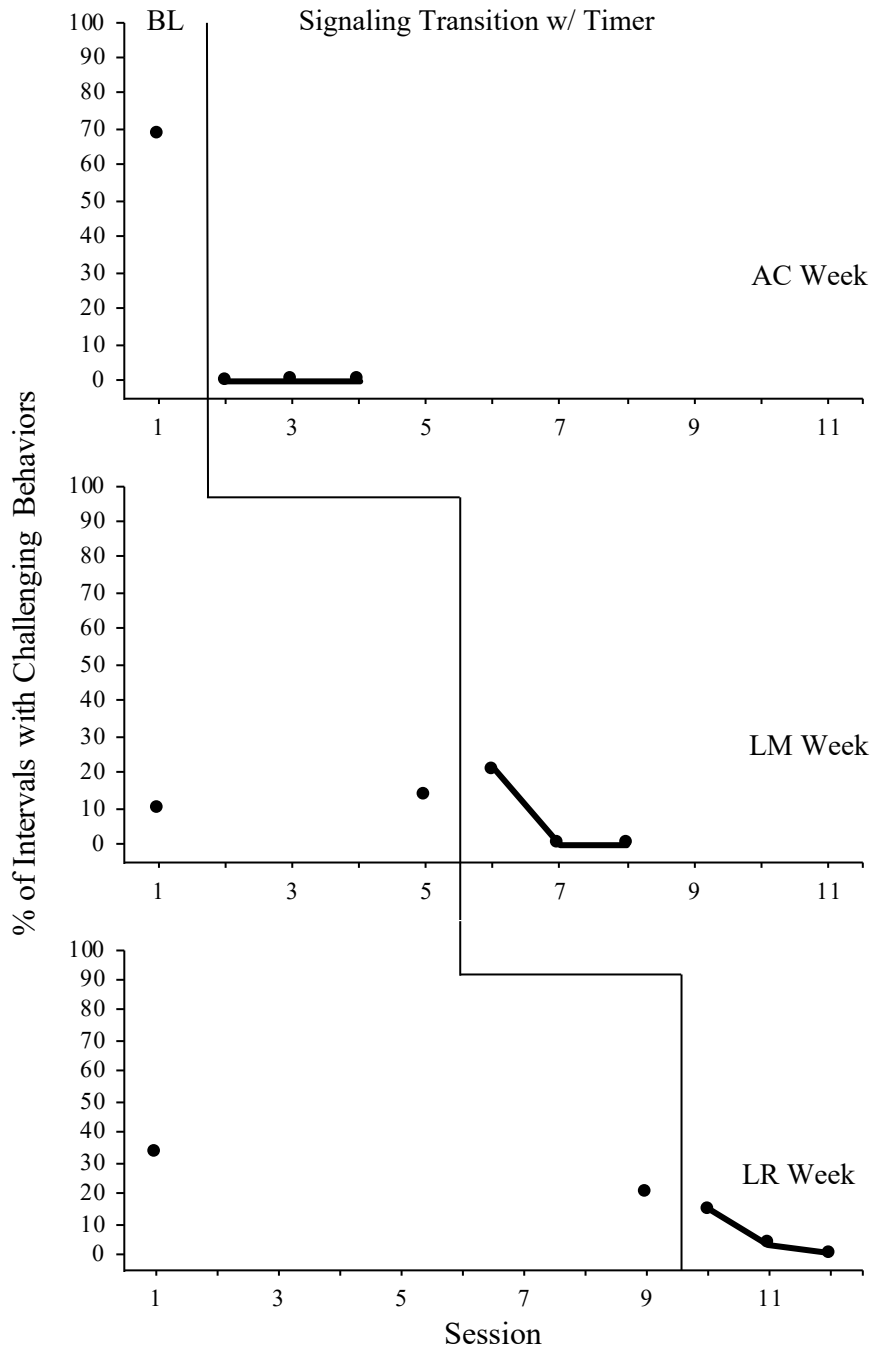


Figure 3

Percentage of Challenging Behavior Using Premack Principle

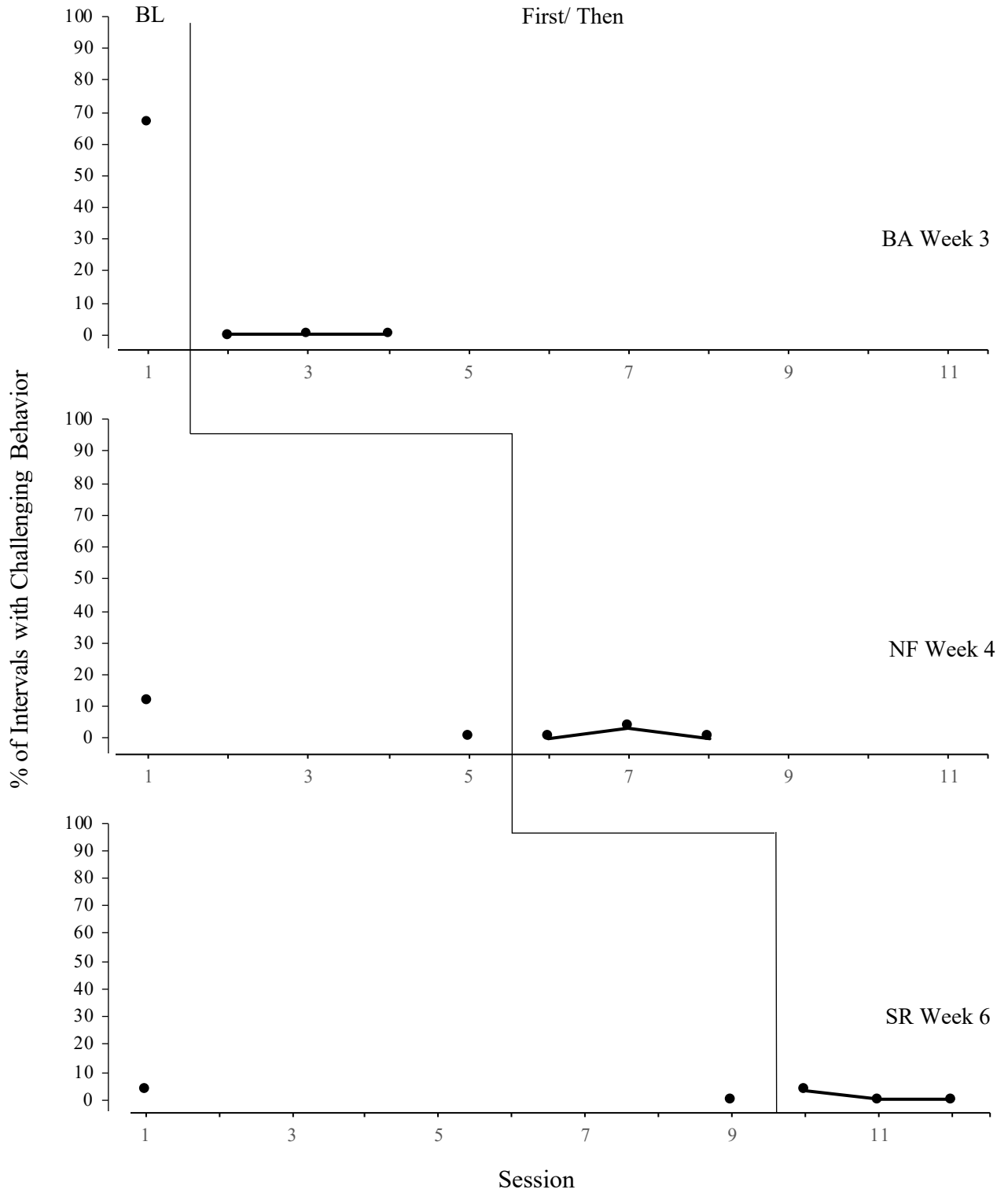
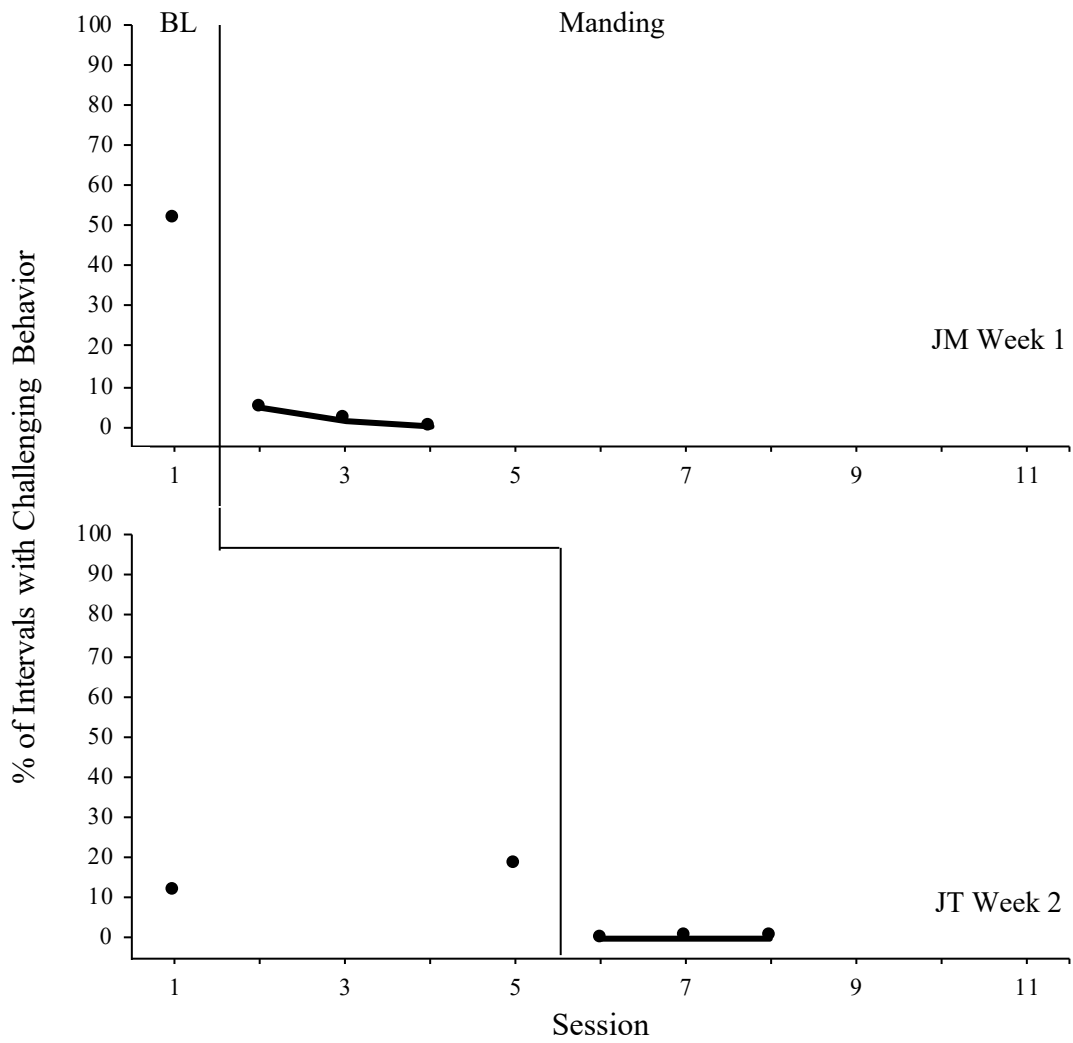


Figure 4

Percentage of Challenging Behavior Using Functional Communication Training



References

- Cooper, J. O., Heron, T. E., & Heward, W.L. (2019). *Applied Behavior Analysis* (3rd Edition). Hoboken, NJ: Pearson Education.
- Dyer, K., Dunlap, G., & Winterling, V. (1990). Effects of choice making on the serious problem behaviors of students with severe handicaps. *Journal of Applied Behavior Analysis*, 23, 515-524. <https://doi.org/10.1901/jaba.1990.23-515>
- Flannery, K.B., & Horner, R.H. (1994). The relationship between predictability and problem behavior for students with severe disabilities. *Journal of Behavioral Education*, 4(2), 157-176. <https://doi.org/10.1007/BF01544110>
- Kazdin, A. E. (1982). *Single-case research designs: Methods for clinical and applied settings*. New York, NY: Oxford University Press.
- Murphy, R. J., & Bryan, A. J. (1980). Multiple-baseline and multiple-probe designs: Practical alternatives for special education assessment and evaluation. *The Journal of Special Education*, 14(3), 325-335. <https://doi.org/10.1177/002246698001400306>
- Ramsey, S. A., Waller, R. J., & Walker, A. (2005). Using visual interventions as a component of positive behavioral support for a student with aggressive behaviors and mental retardation. *Social Work in Mental Health*, 3:4, 99-108. https://doi.org/10.1300/J200v03n04_06
- Reed, F. D. D., & Reed, D. D. (Eds.). (2015). *Autism service delivery: Bridging the gap between science and practice*. Springer Science + Business Media. <https://doi.org/10.1007/978-1-4939-2656-5>
- Trump, C. E., Pennington, R. C., Travers, J. C., Ringdahl, J. E., Whiteside, E. E., & Ayres, K. M. (2018). Applied behavior analysis in special education: Misconceptions and guidelines for use. *Teaching Exceptional Children*, 50(6), 381-393. <https://doi.org/10.1177/0040059918775020>